



# Holiday Inn Brighton - Seafront Hotel

137 King's Road, Sussex, Brighton, BN1 2JF

0871 510 1361 (tel:0871 510 1361)

Visit website (<https://www.hibrighton.com>)



## Access Guide

### Hotel Introduction

#### Hotel Information

- The hotel has its own parking facilities.
- This hotel has its own restaurant located on the ground floor.
- The restaurant can be accessed from the reception lobby.
- Conference/meeting facilities are available.
- The conference/meeting facilities are located on the ground and first floors.

[View](#)

#### Room Information

- The hotel has 131 rooms in total.
- There is an/are accessible room(s) within the hotel.
- The accessible room(s) is/are located on the first floor.
- The hotel has 2 accessible room(s) with accessible ensuite facilities.
- There is/are 2 accessible room(s) with a wet room/wheel in shower.
- There is not an/are not adjoining room(s) available for the accessible room(s).
- The accessible rooms are 26m - 28m from the lift.

[View](#)

- There are no rooms on the ground floor.
- There is not a/are not standard room(s) available on the ground floor.
- There is an/are adjoining room(s) available for the standard room(s).
- Rooms on other floors are accessed via stairs and lift.

### Auxiliary Aids

[View](#)

- Vibrating pillows with flashing beacons are available on request.
- Bed raisers are not available on request.
- All televisions have subtitles available.

## Getting Here

### By Road

[View](#)

- This hotel is located along the Brighton seafront on the A259 (Kings Road). The main road into Brighton is the A23 which leads from the M23.
- This hotel has a car park which is chargeable to all users.

### By Bus

[View](#)

- There is not a bus stop within 150 metres of the hotel.
- There is a bus stop on the A259 (Kings Road) which is within 0.2 miles of the hotel and the service that stops here is the 77.
- **[For more information on buses in Brighton please click here \(opens new tab\) \(http://www.buses.co.uk\)](http://www.buses.co.uk)**.

### By Train

[View](#)

- The nearest Railway Station is Brighton.
- The nearest railway station is Brighton which is 1 mile (20 minute walk) from the hotel with direct services to Gatwick Airport, Clapham Junction, East Croydon, London Victoria, London Bridge and London St Pancras and is served by Gatwick Express, Southern Railway and Thameslink. There are bus and taxi routes from the station to the hotel.
- **[For more information on National Rail please click here \(opens new tab\) \(http://www.nationalrail.co.uk/stations/BTN/details.html\)](http://www.nationalrail.co.uk/stations/BTN/details.html)**.

## Getting Help and Assistance

- There is a member of staff available for help and assistance.
- Staff receive disability awareness/equality training.
- There is not a member of staff trained in British Sign Language.
- Staff do not receive deaf awareness training.
- British Sign Language interpreters cannot be provided on request.

- The alternative formats documents can be provided in include; large print on request.
- There is not an assistance dog toilet or toileting area at the venue/near by.
- Water bowls for assistance dogs are available.
- There are mobility aids available.
- The mobility aids available include wheelchairs.
- To obtain mobility aids please contact reception.

## Photos



1



2



3



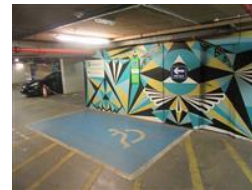
4



5



6



7



8



9



10

## Parking

### Parking

- The hotel does have its own parking facilities.
- The car park is located in the basement.
- The car park type is underground.
- The car park does have a height restriction barrier.
- The maximum height of the restriction barrier is 180cm (5ft 11in).

[View](#)

- The car park does have a barrier control system.
- Controls at the barrier are within the range of 100cm to 110cm.
- The barrier controls/touchscreen can be reached from the car.
- The car park surface is concrete.
- There is a/are Blue Badge parking bay(s) available.
- The Blue Badge bay(s) is/are clearly marked.
- There is/are 1 designated Blue Badge parking bay(s) within the car park.
- The dimensions of the designated Blue Badge parking bay(s) surveyed are 242cm x 432cm (7ft 11in x 14ft 2in).
- There is not a 120cm hatched zone around the Blue Badge parking bay(s).
- Parking spaces for Blue Badge holders do not need to be booked in advance.
- Clearly marked/signposted parent and child parking bays are not available.
- All parking spaces are provided on a first come first served basis.

### **Paying**

[View](#)

- There are parking charges for the car park.
- Parking is not free for visitors of the venue.
- Parking charges can be refunded at the hotel.
- Payment signs are not provided.
- Payment signs are located at reception.
- Payment term signs do make it clear if parking charges apply to Blue Badge holders.
- Parking is not free for Blue Badge holders.
- Payment machines are located at reception.

### **Access from the Car Park**

[View](#)

- The route from the car park to the entrance is accessible to a wheelchair user with assistance.
- Assistance may be required because there is/are uneven surfaces.
- The entrance is not clearly visible from the car park.
- The route from the car park to the entrance is clearly signposted.
- The surface on the approach to the entrance is concrete.
- There is not a road to cross between the car park and the entrance.
- The nearest designated Blue Badge parking bay is approximately 6m (6yd 1ft) from the car park lift.

### **Drop-off Point(s)**

[View](#)

- There is not a/are not clearly marked drop-off point(s).

## Comments

[View](#)

- Alternatively there are 2 Blue Badge parking bays outside the front of the hotel (shown in photograph 10).

## Other Floors (Car Park)

### Photos



1



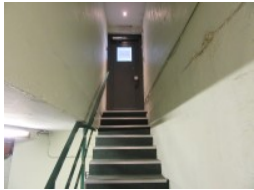
2



3



4



5

---

## Stairs

[View](#)

- Stairs can be used to access other floors.
- The stairs are for public use.
- The stairs are located in the car park.
- The stairs are approximately 2m from the main entrance.
- The stairs are clearly visible from the entrance.
- There are manual, heavy, single doors to enter and exit the stairwell on all floors.
- The floors which are accessible by stairs are B and G.
- There are 15+ steps between floors.
- The height of the step(s) is/are between the recommended 15cm and 18cm.
- The going of the step(s) is/are not between the recommended 30cm and 45cm.
- The steps are clearly marked.
- There is a/are handrail(s) at the step(s).
- The steps have a handrail on the left going up.
- Handrails are at the recommended height (90cm-100cm).

- Handrails do cover the flight of stairs throughout its length.
- Handrails are easy to grip.
- Handrails do not extend horizontally beyond the first and last steps.
- There is a landing.
- Clear signs indicating the facilities on each floor are provided on landings.
- The lighting levels at the steps are good.

## Lift (Car Park)

### Photos



1



2

- 
- There is a lift for public use.
  - The lift is located in the car park.
  - Signs indicating the location of the lift are clearly visible from the entrance.
  - The lift is approximately 8m (8yd 2ft) from the Blue Badge bay.
  - The lift is a standard lift.
  - A member of staff does not need to be notified for use of the lift.
  - The floors which are accessible by this lift are B and G.
  - Clear signs indicating the facilities on each floor are not provided on lift lobby landings.
  - There is a clear level manoeuvring space of 150cm x 150cm in front of the lift.
  - Lift doors do contrast visually with lift lobby walls.
  - The external controls for the lift are not within 90cm - 110cm from the floor.
  - The colour contrast between the external lift controls and the control plate is good.
  - The colour contrast between the external lift control plate and the wall is good.
  - The clear door width is 147cm (4ft 10in).
  - The dimensions of the lift are 230cm x 115cm (7ft 7in x 3ft 9in).
  - There are no separate entry and exit doors in the lift.
  - There is not a mirror to aid reversing out of the lift.
  - There is a list of floor services available within the lift.

- The lift does not have a visual floor indicator.
- The lift does not have an audible announcer.
- The controls for the lift are not within 90cm - 120cm from the floor.
- There is not a hearing loop system.
- The lift does not have Braille markings.
- The lift does not have tactile markings.
- The lighting levels in the lift are good.

## Outside Access (Car Park)

### Photos



1



2

### Entrance

[View](#)

- This information is for the entrance located at the front of the hotel.
- The entrance area/door is clearly signed.
- There is step-free access at this entrance.
- There is a canopy or recess which provides weather protection at this entrance.
- The entrance door(s) does not/do not contrast visually with its immediate surroundings.
- The main door(s) open(s) towards you (pull).
- The door(s) is/are single width.
- The door(s) is/are heavy.
- The width of the door opening is 66cm.
- There is a small lip on the threshold of the entrance, with a height of 2cm or below.

## Outside Access (Hotel Entrance)

### Photos



1



2



3



4



5



6



7

## Entrance

View

- This information is for the entrance located at the front of the hotel.
- The entrance area/door is clearly signed.
- There is ramped/sloped or stepped access at this entrance.
- There is a canopy or recess which provides weather protection at this entrance.
- There is a dark mat or floor marking at this entrance that might be perceived as a hole.
- The entrance door(s) does not/do not contrast visually with its immediate surroundings.
- The bell/buzzer is not in a suitable position to allow wheelchair users to gain access.
- The height of the bell/buzzer is 85cm (2ft 9in).
- The main door(s) open(s) automatically.
- The main automatic door(s) is/are push pad or push button activated.
- The push pad or push button is 85cm from floor level.
- The door(s) is/are single width.
- The width of the door opening is 105cm.
- There is a small lip on the threshold of the entrance, with a height of 2cm or below.
- There is a member of staff available for assistance at this entrance.

## Ramp/Slope

View

- The ramp/slope is located to the left as you face the entrance.
- The gradient of the ramp/slope is slight.
- The ramp/slope is permanent.
- There is a level landing at the top of the ramp/slope.



- There is not a/are not handrail(s) at the ramp.
- The ramp/slope does bypass the step(s).

## Step(s)

View

- The step(s) is/are located in front of the entrance.
- There is/are 5 step(s).
- The step(s) is/are clearly marked.
- The height of the step(s) is/are between 15cm and 18cm.
- The going of the step(s) is/are between 30cm and 45cm.
- There is a/are handrail(s) at the step(s).
- The handrail(s) is/are on both sides.
- Handrails are at the recommended height (90cm-100cm).
- Handrails do cover the flight of stairs throughout its length.
- Handrails are easy to grip.
- Handrails do not extend horizontally beyond the first and last steps.

## Reception

### Photos



1



2



3



4



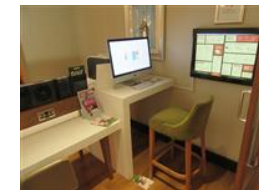
5



6



7



8

## Reception

View

- The reception point is located to the right as you enter the hotel entrance.

- The reception point is approximately 5m (5yd 1ft) from the hotel entrance.
- The reception area/desk is clearly visible from the entrance.
- There is step-free access to the reception point.
- There is a clear unobstructed route to the reception point.
- There are no windows, TVs, glazed screens or mirrors behind the reception point which could adversely affect the ability of someone to lip read.
- The reception counter is not placed in front of a background which is patterned.
- The lighting levels at the reception point are good.
- The height of the reception counter is high (110cm+).
- There is sufficient space to write or sign documents on the counter.
- There is a lowered section of the counter.
- The lowered section of the counter is at the recommended height of 76cm.
- There is sufficient space to write or sign documents on the lowered section of the counter.
- There is a clear knee recess beneath the lowered section of the counter.
- The clear knee recess has the recommended dimensions of 70cm (height) x 50cm (depth).
- The counter is staffed.
- Clipboards can be provided to anyone who is unable to use the desk.
- There is not a hearing assistance system at the reception point.
- Signs and universally accepted symbols or pictograms, indicating lifts, stairs, WCs, circulation routes and other parts of the building are provided in the reception area.
- The type of flooring in the reception area is carpet and wood.

### Reception Waiting Area

[View](#)

- There is a waiting area close to the reception point.
- Access to the waiting area is unobstructed.
- There is a mixture of seating with and without armrests.
- There is sufficient space for a wheelchair user to use the waiting area.

### Comments

[View](#)

- There is a computer area within the reception lobby as shown in photograph 7 & 8.
- The lowest height of the desk is 66cm.
- The highest height of the desk is 92cm.

## Getting Around

 **Photos**



1



2



3



4



5



6



7



8

## Access

- There is step-free access throughout the building.

[View](#)

## Circulation

- There are not doors in corridors/walkways which have to be opened manually.
- The type of flooring in corridors/walkways is carpet and wood.
- There is some flooring in corridors/walkways which includes patterns or colours which could be confusing or look like steps or holes to some people.
- There is some flooring in corridors/walkways which is shiny and could cause issues with glare or look slippery to some people.
- There is good colour contrast between the walls and floor in all areas.
- The lighting levels are good.
- Access to other floors/levels is via stairs and lift.

[View](#)

## Signage

- Wayfinding signage is provided.
- The colour, design and typeface of signs is consistent throughout the building.

[View](#)

## Audio

- This venue does play background music in public areas.
- There is not a hearing assistance system in the public areas of the building.

[View](#)

## Eating and Drinking (Open Lobby Bar)

## Photos



1



2



3



4



5



6



7



8



9

- The following information is for the restaurant/bar.
- The restaurant/bar is located on the left hand side as you enter the hotel.
- There is step-free access to the restaurant/bar.
- Full table service is available.
- Food and/or drinks can be ordered from the service counter.
- The height of the service counter is high (110cm+).
- There is not a lowered section of the counter.
- There is not a hearing assistance system.
- There is step-free access within the restaurant/bar.
- There is ample room for a wheelchair user to manoeuvre.
- This area does not play background music.
- The type of flooring in this area is carpet, tiles and laminate.
- Some tables are permanently fixed.
- Some chairs are permanently fixed.
- Some chairs have armrests on both sides.

- The nearest table is approximately 2m from the entrance/opening.
- The nearest table is approximately 3m from the till/counter.
- The distance between the floor and the lowest table is 53cm.
- The distance between the floor and the highest table is 99cm.
- Plastic/takeaway cups are available.
- Plastic/takeaway cutlery is not available.
- Drinking straws are available.
- There are hand held menus available.
- Menus are not available in Braille.
- Menus are not available in large print.
- Picture menus are not available.
- Menus are clearly written.
- Menus are presented in contrasting colours.
- The type of food served here is hot and cold meals and snacks.
- The lighting levels are good.

## Outside Access (Stock Burger Co External Entrance)

### Photos



1



2



3



4



5



6



7

### Entrance

- This information is for the entrance located at the front of the building, to the right of the hotel entrance.
- The entrance area/door is clearly signed.

[View](#)

- There is ramped/sloped or stepped access at this entrance.
- There is not a canopy or recess which provides weather protection at this entrance.
- There is a dark mat or floor marking at this entrance that might be perceived as a hole.
- The entrance door(s) does not/do not contrast visually with its immediate surroundings.
- The main door(s) open(s) towards you (pull).
- The door(s) is/are double width.
- The door(s) is/are heavy.
- The width of the door opening is 166cm.
- There is a small lip on the threshold of the entrance, with a height of 2cm or below.
- There is a second set of doors.
- The door(s) open(s) towards you (pull).
- The door(s) is/are double width.
- The door(s) is/are heavy.
- The width of the door opening is 176cm.
- There is a small lip on the threshold of the entrance, with a height of 2cm or below.

### Ramp/Slope

[View](#)

- The ramp/slope is located to the left as you face the entrance.
- The gradient of the ramp/slope is slight.
- The ramp/slope is permanent.
- There is a level landing at the top of the ramp/slope.
- There is a/are handrail(s) at the ramp.
- The handrail(s) is/are on the right going up.
- The ramp/slope does bypass the step(s).

### Step(s)

[View](#)

- The step(s) is/are located in front of the entrance.
- There is/are 4 step(s).
- The step(s) is/are clearly marked.
- The height of the step(s) is/are not between 15cm and 18cm.
- The height of the step(s) is/are 20cm.
- The going of the step(s) is/are not between 30cm and 45cm.
- There is a/are handrail(s) at the step(s).
- The handrail(s) is/are on both sides.

- Handrails are at the recommended height (90cm-100cm).
- Handrails do cover the flight of stairs throughout its length.
- Handrails are easy to grip.
- Handrails do not extend horizontally beyond the first and last steps.

## Entrance (Stock Burger Co Internal Entrance)

### Photos



1

### Entrance

[View](#)

- This information is for the entrance located to the right of the reception lobby.
- The entrance area/door is clearly signed.
- There is step-free access at this entrance.
- The entrance door(s) does not/do not contrast visually with its immediate surroundings.
- The main door(s) open(s) towards you (pull).
- The door(s) is/are double width.
- The door(s) is/are heavy.
- The width of the door opening is 140cm.

## Eating and Drinking (Stock Burger Co)

### Photos



1



2



3



4



5



6

- 
- The following information is for the restaurant/bar.
  - The restaurant/bar is located on the ground floor, to the left of reception.
  - There is step-free access to the restaurant/bar.
  - There is a/are double, heavy manual door(s) to access this area.
  - Full table service is available.
  - Food and/or drinks can be ordered from the service counter.
  - The height of the service counter is high (110cm+).
  - There is not a lowered section of the counter.
  - There is not a hearing assistance system.
  - There is step-free access within the restaurant/bar.
  - There is ample room for a wheelchair user to manoeuvre.
  - This area does play background music.
  - The type of flooring in this area is wood.
  - Some tables are permanently fixed.
  - Some chairs are permanently fixed.
  - Some chairs have armrests on both sides.
  - The nearest table is approximately 1m from the entrance/opening.
  - The nearest table is approximately 2m from the till/counter.
  - The distance between the floor and the lowest table is 68cm.
  - The distance between the floor and the highest table is 100cm.
  - Plastic/takeaway cups are available.
  - Plastic/takeaway cutlery is not available.
  - There are hand held menus available.
  - Menus are not available in Braille.
  - Menus are not available in large print.
  - Picture menus are not available.
  - Menus are clearly written.
  - Menus are presented in contrasting colours.



- The type of food served here is hot and cold meals and snacks.
- The lighting levels are good.

### Comments

- Drinking straws are available on request.

[View](#)

## Accessible Room(s) (Rooms 136 and 137)

### Photos



1



2



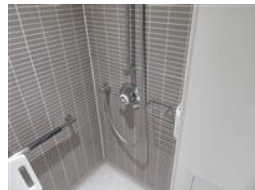
3



4



5



6



7

### Accessible Room Information

- The details in this section relates to the accessible room(s) with a wet room/wheel in shower.
- This type of accessible room is located on the first floor.
- There is step-free access to this type of accessible room.
- All accessible rooms of this type have identical specifications.
- Guests do not need to open a door between the lift and the room(s).
- The narrowest width of the corridor leading to the room surveyed was 150cm.

[View](#)

### Bedroom Features

- The accessible room surveyed is located on the first floor.
- The accessible room surveyed at the time of the visit was Room 136.
- There is step-free access to the accessible room surveyed, via lift.

[View](#)

- There is numbered signage on or near the accessible room door.
- The door is key card activated.
- The fob/card reader height is 124cm.
- The width of the door is 75cm (2ft 6in).
- There are lowered spy holes available.
- The bed type is double.
- The bed height is not adjustable.
- The height of the bed is 60cm (1ft 12in).
- The measurement between the bed base and floor is 12cm (5in).
- The bed is not moveable.
- The room does have an unobstructed minimum turning space of 150cm x 150cm next to the bed.
- The height of the desk is 75cm.
- The desk is not height adjustable.
- The desk knee recess has the recommended dimensions of 70cm (height) x 50cm (depth).
- The room surveyed had a desk chair with armrests and an armchair.
- Wardrobes have been adapted to allow use from a seated position.
- Light switches are between 75cm and 120cm (4ft) from floor level.
- Electric sockets are between 40cm and 100cm (4ft) from floor level.
- The window control type(s) for the room is a/are standard lever(s).
- There is an emergency alarm in the room.
- The emergency pull cord alarm is within reach and fully functional.
- The emergency alarm rings to reception.
- There is not a flashing fire alarm beacon within the room.
- The type of flooring is carpet.

## Ensuite Facilities

[View](#)

- The ensuite door opens outwards.
- The door weight is light.
- The door is locked by a twist lock.
- The width of the door to the ensuite is 79cm (2ft 7in).
- The dimensions of the ensuite are 190cm x 198cm (6ft 3in x 6ft 6in).
- The ensuite does have an unobstructed minimum turning space of 150cm x 150cm in front of the toilet seat.
- The ensuite has a non-slip floor.
- There is an emergency alarm within the ensuite.
- The emergency pull cord alarm is out of reach (higher than 10cm (4") from floor).

- The emergency alarm rings to reception.
- There is not a flashing fire alarm beacon within the ensuite.
- Disposal facilities are available.
- There is a/are pedal waste paper bin disposal units.
- There is a mirror.
- The mirror is not placed at a lower level or at an angle for ease of use.
- There is not a shelf immediately next to or behind the toilet.
- There is a wash basin.
- The wash basin cannot be reached from seated on the toilet.
- The wash basin is not placed higher than 74cm (2ft 5in).
- The height of the wash basin is 70cm.
- There is a vertical wall-mounted grab rail on the left hand side of the wash basin.
- The tap type is lever.
- There is a mixer tap.
- There is a soap dispenser.
- The soap dispenser cannot be reached from seated on the toilet.
- The height of the soap dispenser is 77cm.

### Toilet Details

[View](#)

- The height of the toilet seat above floor level is 48cm (1ft 7in).
- The toilet has a lid.
- There is a lateral transfer space.
- As you face the toilet pan the transfer space is on the left.
- The lateral transfer space is 120cm (3ft 11in).
- There is a flush, however it is not on the transfer side.
- There is a spatula type lever flush.
- There is a dropdown rail, however it is not on the transfer side.
- There is a/are wall-mounted grab rail(s) available.
- As you face the toilet, the wall mounted grab rails are on the right.
- There is not a vertical wall-mounted grab rail on the transfer side.
- There is a horizontal wall-mounted grab rail on the opposite side of the seat to the transfer space.
- There is a toilet roll holder.
- The toilet roll holder can be reached from seated on the toilet.
- The toilet roll holder is not placed higher than 100cm (3ft 3in).

## Shower Details

[View](#)

- The ensuite has a wheel in shower.
- The shower head is height adjustable.
- The shower control type is lever.
- A shower chair is available.
- There is a/are wall-mounted grab rail(s) available for the shower.
- There are not horizontal and/or dropdown rails available on both sides of the shower seat.
- There is a single vertical grab rail to assist standing users.

## Colour Contrast and Lighting

[View](#)

- The colour contrast between the external hotel room door and wall is good.
- The colour contrast between the internal hotel room door and wall is fair.
- The colour contrast between the hotel room walls and floor is good.
- The colour contrast between the external ensuite door and wall is good.
- The colour contrast between the internal ensuite door and wall is good.
- The colour contrast between the ensuite walls and floor is good.
- The colour contrast between the drop down rail(s) and wall is good.
- The colour contrast between the wall-mounted grab rail(s) and wall is good.
- The contrast between the wash basin wall-mounted grab rail(s) and wall is good.
- The colour contrast between the shower wall-mounted grab rails and wall is good.
- The toilet seat colour contrast is poor.
- The lighting levels in the room are low.
- The lighting levels in the ensuite are good.

## Other Floors

### Photos



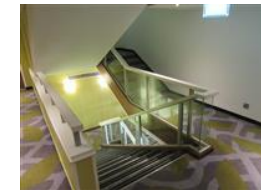
1



2



3



4



5



6



7



8

## Stairs

[View](#)

- Stairs can be used to access other floors.
- The stairs are for public use.
- The stairs are located to the right as you enter the hotel, opposite reception.
- The stairs are approximately 13m from the hotel entrance.
- The stairs are clearly visible from the entrance.
- The floors which are accessible by stairs are G, 1, 2, 3, 4 and 5.
- There are 15+ steps between floors.
- The height of the step(s) is/are not between the recommended 15cm and 18cm.
- The height of the step(s) is/are 14cm.
- The going of the step(s) is/are between the recommended 30cm and 45cm.
- The steps are clearly marked.
- There is a/are handrail(s) at the step(s).
- The steps have a handrail on the left going up.
- Handrails are at the recommended height (90cm-100cm).
- Handrails do cover the flight of stairs throughout its length.
- Handrails are not easy to grip.
- Handrails do not extend horizontally beyond the first and last steps.
- There is a landing.
- Clear signs indicating the facilities on each floor are provided on landings.
- The lighting levels at the steps are good.

## Lift

 **Photos**



1



2

- There is a lift for public use.
- The lift is located in the reception lobby.
- Signs indicating the location of the lift are not available from the entrance.
- The lift is approximately 9m (9yd 2ft) from the hotel entrance.
- The lift is a standard lift.
- A member of staff does not need to be notified for use of the lift.
- The floors which are accessible by this lift are G, 1, 2, 3, 4 and 5.
- Clear signs indicating the facilities on each floor are provided on lift lobby landings.
- There is a clear level manoeuvring space of 150cm x 150cm in front of the lift.
- Lift doors do contrast visually with lift lobby walls.
- The external controls for the lift are within 90cm - 110cm from the floor.
- The colour contrast between the external lift controls and the control plate is fair.
- The colour contrast between the external lift control plate and the wall is poor.
- The clear door width is 87cm (2ft 10in).
- The dimensions of the lift are 136cm x 132cm (4ft 6in x 4ft 4in).
- There are no separate entry and exit doors in the lift.
- There is a mirror to aid reversing out of the lift.
- There is a list of floor services available within the lift.
- The lift does have a visual floor indicator.
- The lift does have an audible announcer.
- The controls for the lift are within 90cm - 120cm from the floor.
- There is not a hearing loop system.
- The lift does not have Braille markings.
- The lift does have tactile markings.
- The lighting levels in the lift are good.

## Conference / Meeting Facilities (Glyndebourne 1)



1



2



3



4

- Conference/meeting facilities are available.
- The conference/meeting facilities are located on the second floor.
- There is step-free access to the conference/meeting facilities, via lift.
- The door opening width(s) is/are 75cm+ for the room(s).
- There is not a hearing assistance system for the room(s).
- There are no chairs with armrests on both sides within the room(s).
- There is sufficient space for a wheelchair user to manoeuvre within the room(s).
- The lighting levels in the room(s) are good.

## Standard Room(s) (Room 424)

### Photos



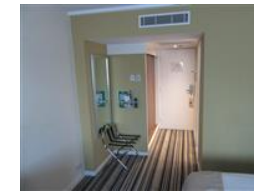
1



2



3



4



5



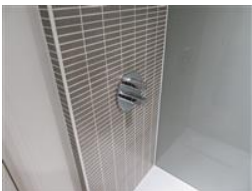
6



7



8



## Bedroom Features

[View](#)

- The room surveyed is located on the fourth floor.
- The room surveyed at the time of the visit was Room 424.
- There is step-free access to the room surveyed, via lift.
- There is numbered signage on or near the room door.
- The width of the door is 75cm (2ft 6in).
- The bed type is double.
- The height of the bed is 65cm (2ft 2in).
- The measurement between the bed base and floor is 12cm (5in).
- Light switches are not within 120cm (3ft 11in) from floor level.
- There is not an emergency alarm in the room.
- There is not a flashing fire alarm beacon within the room.
- The type of facilities within the ensuite include; a toilet, a wash basin and a shower.
- The ensuite door opens inwards.
- The width of the door to the ensuite is 63cm (2ft 1in).
- There is not an emergency alarm within the ensuite.
- There is not a flashing fire alarm beacon within the ensuite.
- The tap type is lever.
- There is a mixer tap.

## Colour Contrast and Lighting

[View](#)

- The colour contrast between the external hotel room door and wall is good.
- The colour contrast between the internal hotel room door and wall is good.
- The colour contrast between the hotel room walls and floor is good.
- The colour contrast between the external ensuite door and wall is good.
- The colour contrast between the internal ensuite door and wall is fair.
- The colour contrast between the walls and floor in the ensuite is good.
- The lighting levels in the room are low.
- The lighting levels in the ensuite are good.

## Comments

[View](#)

- There is a deep step to access the shower as shown in photograph 6.



## Standard Room(s) (Executive Room 408)

### Photos



1



2



3



4



5



6

### Bedroom Features

[View](#)

- The room surveyed is located on the fourth floor.
- The room surveyed at the time of the visit was Room 408.
- There is step-free access to the room surveyed.
- There is numbered signage on or near the room door.
- The width of the door is 75cm (2ft 6in).
- The bed type is double.
- The height of the bed is 65cm (2ft 2in).
- The measurement between the bed base and floor is 10cm (4in).
- Light switches are not within 120cm (3ft 11in) from floor level.
- There is not an emergency alarm in the room.
- There is not a flashing fire alarm beacon within the room.
- The type of facilities within the ensuite include; a toilet, a wash basin, a bath and a shower.
- The ensuite door opens inwards.
- The width of the door to the ensuite is 62cm (2ft).
- There is not an emergency alarm within the ensuite.
- There is not a flashing fire alarm beacon within the ensuite.

- The tap type is lever.
- There is a mixer tap.

## Colour Contrast and Lighting

[View](#)

- The colour contrast between the external hotel room door and wall is good.
- The colour contrast between the internal hotel room door and wall is poor.
- The colour contrast between the hotel room walls and floor is good.
- The colour contrast between the external ensuite door and wall is good.
- The colour contrast between the internal ensuite door and wall is good.
- The colour contrast between the walls and floor in the ensuite is good.
- The lighting levels in the room are good.
- The lighting levels in the ensuite are good.

## Accessible Toilet(s)

### Photos



1



2



3

- 
- There is an/are accessible toilet(s) for public use.

### Location and Access

[View](#)

- The accessible toilet surveyed is not for the sole use of disabled people.
- This accessible toilet is located on the ground floor, to the right of the lobby bar.
- This accessible toilet is approximately 15m (16yd 1ft) from the hotel entrance.
- There is step-free access to the accessible toilet.

### Features and Dimensions

[View](#)

- This is a shared toilet.
- A key is not required for the accessible toilet.

- There is pictorial signage on or near the toilet door.
- The door opens outwards.
- The door is heavy.
- The door is locked by a locking handle.
- The width of the accessible toilet door is 90cm (2ft 11in).
- The dimensions of the accessible toilet are 305cm x 255cm (10ft x 8ft 4in).
- The accessible toilet does have an unobstructed minimum turning space of 150cm x 150cm.
- The toilet has a non-slip floor.
- There is a lateral transfer space.
- As you face the toilet pan the transfer space is on both sides.
- The lateral transfer space on the left is 114cm.
- There is a flush on the transfer side.
- There is not a spatula type lever flush.
- There are dropdown rails on both sides of the toilet.
- There is an emergency alarm.
- The emergency pull cord alarm is not fully functional.
- The emergency pull cord alarm was out of reach (higher than 10cm (4") from floor) when surveyed.
- There is not a flashing fire alarm beacon within the toilet.
- Disposal facilities are available in the toilet.
- There is a/are female sanitary and general domestic waste disposal units.
- There is a/are coat hook(s).
- The height of the coat hook is 120cm from the floor.

### Position of Fixtures

- There is a/are wall-mounted grab rail(s) available.
- As you face the toilet the wall-mounted grab rail(s) is/are on both sides.
- There is a vertical wall-mounted grab rail on the transfer side.
- There is a mirror.
- The mirror is not placed at a lower level or at an angle for ease of use.
- There is not a shelf next to the toilet.
- The toilet has a backrest and a cistern.
- The height of the toilet seat above floor level is 46cm (1ft 6in).
- There is a toilet roll holder.
- The toilet roll holder can be reached from seated on the toilet.
- The toilet roll holder is not placed higher than 100cm (3ft 3in).

**View**

- There is a wash basin.
- The wash basin cannot be reached from seated on the toilet.
- The wash basin is not placed higher than 74cm (2ft 5in).
- There is a vertical wall-mounted grab rail on the right hand side of the wash basin.
- The wash basin tap type is lever.
- There is a mixer tap.
- There is a soap dispenser.
- The soap dispenser cannot be reached from seated on the toilet.
- The height of the soap dispenser is 88cm.
- There is a towel dispenser.
- The towel dispenser cannot be reached from seated on the toilet.
- The towel dispenser is not placed higher than 100cm (3ft 3in).
- There is a hand dryer.
- The hand dryer cannot be reached from seated on the toilet.
- The hand dryer is not placed higher than 100cm (3ft 3in).

### Colour Contrast and Lighting

[View](#)

- The contrast between the external door and wall is good.
- The contrast between the internal door and wall is good.
- The contrast between the dropdown rail(s) and wall is poor.
- The contrast between the wall-mounted grab rail(s) and wall is poor.
- The toilet seat colour contrast is poor.
- The contrast between the walls and floor is good.
- The lighting levels are good.

### Baby Changing Facilities

[View](#)

- Baby changing facilities are located within the accessible toilet.
- The baby change table is set against the wall, permanently fixed at 75cm from the floor.
- The baby change table is not height adjustable.
- The height of the baby change table once extended is 89cm (2ft 11in).

## Standard Toilet(s)

 **Photos**



1



2



3

---

### Availability and Location of Standard Toilets

- Standard toilet facilities are available.

[View](#)

### Access to Standard Female and Male Toilet(s)

- The female and male toilet facilities that were surveyed are located on the mezzanine floor.
- The female and male toilets are approximately 4m (4yd 1ft) from the stairs.
- Inside the venue, there is not level access to the female and male toilets.
- An ambulant toilet cubicle with wall mounted grab rails is not available.
- Lighting levels are medium.

[View](#)